

## How Can You Help?

You can make a powerful, meaningful and sustainable, difference in rural Rwanda today!

- Volunteer: Join a team to Rwanda. Hilary visits several times a year to lead teams and co-ordinate progress. Volunteers use their skills and talents and see first hand how Embrace Rwanda is making a difference. The families in Rwanda are encouraged that they are not forgotten within the world-wide Christian community.
- Donate: The administration is totally voluntary, allowing **100% of donations to go directly to the projects.**
- Check out the website for more details, pictures, and exciting stories: **[www.embracerwanda.org](http://www.embracerwanda.org)**
- Pray for Hilary and the people of Rwanda.



## Embrace Rwanda International Society

### Patron:

The Most Rev. Dr. Onesphore Rwaje,  
Archbishop of the Province of  
Anglican Church of Rwanda

### Contact Information:

Hilary King, Executive Director  
Embrace Rwanda, Canada Office  
301-3980 Inlet Crescent  
North Vancouver, BC V7G 2P9  
604 929 1837  
[hilary.king@embracerwanda.org](mailto:hilary.king@embracerwanda.org)

Francis Gakuba, Program Director  
Embrace Rwanda, Rwanda Office  
(+250) 0788895208  
[gakubafraco@yahoo.fr](mailto:gakubafraco@yahoo.fr)



Charitable Registration Number: 86956 3213 RR0001



## SUPPORTING RURAL COMMUNITIES IN RWANDA



- Maternal/Child Health
- Early Childhood Education
- Vocational Training Centre
- Economic Development

## Embrace Rwanda International Society

## It all started with a baby in a washing up bowl...

When Hilary King visited Kigeme, Rwanda, in 2006, she saw that premature babies were placed into washing up bowls in a front of a wood fire to keep them warm. Her heart was touched and with her background in health care, Hilary felt sure that things could be improved.



The first project was goats. The gift of a goat to each pregnant mum provided better nutrition and the beginning of an income for the family. The Healthy Mums Project was born.

As more and more needs became evident in that extremely poor district of Rwanda, more answers were found and the scope of Embrace Rwanda increased.

Embrace Rwanda International Society now has many projects, which are grouped into 4 main sections: Healthy Mums Project, Early Childhood Education, Vocational Training Centre, and Economic Development.

Embrace Rwanda provides a remarkable example of how developing relationships, establishing partnerships and building on the strengths and resilience of a very vulnerable population has created an environment for healing and growth.

## Economic Development

Embrace Rwanda looks to promote long-term development, not a “quick fix”. The communities in Rwanda are anxious to promote self-reliance, so donations to Embrace Rwanda increasingly go to provide funds for micro-loans to start new businesses.

Micro-loans are organized within more than 30 community associations, for the purpose of generating income through small projects and small business collectives. Each small business gives back to the collective, building independence and sustainability.

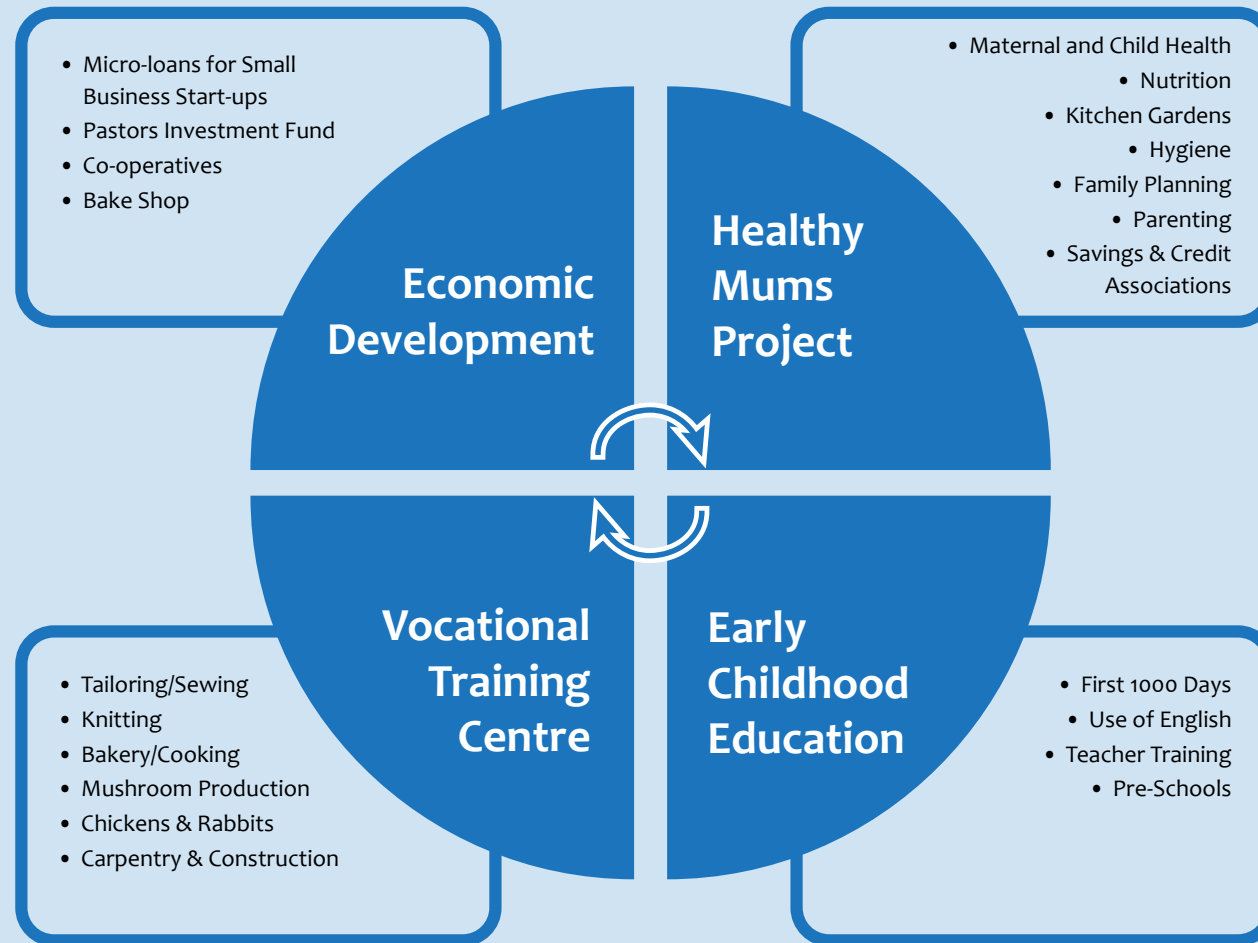
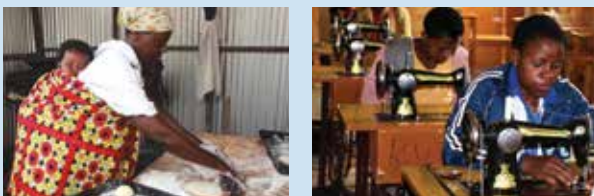
The Pastors’ Investment Fund provides capital funds for local parishes to start income generating activities in their community e.g. brick making and forestry. It offers employment opportunities and income to fund the projects within the local parish. We look towards a future where they no longer rely on donations.



## Vocational Training Centre

Vocational training opportunities are scarce in poverty-stricken rural Rwanda. Embrace Rwanda has set up several schools providing the knowledge and experience in useful trades, thus providing an income for families in the local communities. Plans are underway to add carpentry and construction training.

Projects inter-link and support each other: e.g. the wearing of uniforms in pre-schools is a mark of pride, so uniforms are made in the sewing school for a low cost, benefiting the sewing school, the pre-schools, and local families.



Embrace Rwanda, a Christian-based organization, is at the heart of major change within one of the poorest regions of Rwanda, bringing hope for the future. The model of Embrace Rwanda in Kigeme is now being replicated in other districts (Butare and Shyogwe). The goals of Embrace Rwanda are in line with the Rwanda government’s “Vision 20/20” Millennium goals. It has been estimated that the work of Embrace Rwanda over the last five years has **impacted 24,000 people** in the Kigeme Diocese.

## Healthy Mums Project

Maternal and child survival are high health challenges and priorities for rural Rwanda. Trained workers are now employed to visit / advise / care for mums and babies, providing practical support towards healthy pregnancies and full-term healthy babies. As a result, many more women are visiting the local Health Centre for regular check-ups, and giving birth in the local hospital. Over 800 mothers are benefiting from the Healthy Mums Project. Now mums bring their husbands and the whole family is involved.



## Early Childhood Education

In partnership with the Schmidt Family Foundation in Canada, many chapels in rural communities have been completed, providing multi purpose spaces for worship and pre-school classrooms. Sixteen schools, staffed by 24 teachers offer a sound educational foundation in English for more than 1000 children. The next project is to focus on the first ‘1000 days’ of life and find opportunities for interventions that can significantly impact a child’s physical and cognitive development. Our hope is to ensure that all have access to the nutrients they need for optimal health and development.

